

Community Engagement Plan

Nant y Moch Wind Farm Development

JULY 2009

PART 1: BACKGROUND INFORMATION

What is the Nant y Moch Wind Farm Development?

The Nant y Moch Wind Farm development is within an area of land identified by the National Assembly for Wales as a strategic area for the delivery of large scale wind energy generation. This is to support UK climate change action, contribute to Wales' renewable energy targets for 2010 and 2020 and to ensure security in our electricity supply. The area of land, also known as Strategic Search Area D (SSA D) was identified in Technical Advice Note 8: Renewable Energy issued in 2005.

Airtricity submitted a tender bid to Forestry Commission Wales (FCW) in December 2006 for the development of a wind energy scheme at this site and has subsequently been awarded a contract for the development of the site, which, combined with several tracts of private landholding surrounding the FCW land, could potentially constitute between 140 – 170 MW of installed capacity, generating green electricity equivalent to the domestic electricity requirements of approximately 100,000 homes.

The principal stages of development of the scheme are as follows:

1. Stage 1: Early development – site surveys, statutory and community consultations, planning discussions, environmental assessments, site design etc
2. Stage 2: Pre planning submission – fuller community consultations
3. Stage 3: Submission and Decision Period: planning application to DBERR/IPC
4. Stage 4: Post Decision: if consent awarded, consultation through to construction and beyond

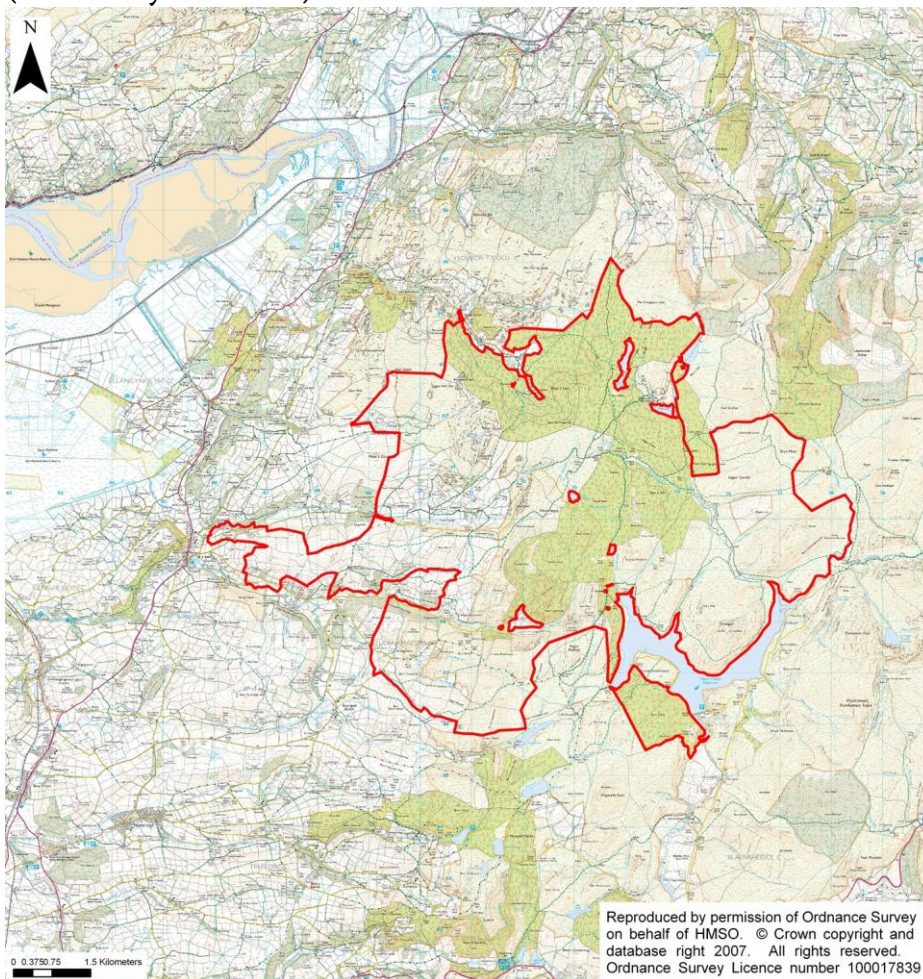
Who is Airtricity?

Airtricity (also referred to in this document as 'the developer') is the renewable energy development division of Scottish and Southern Energy (SSE). The company has responsibility for the development of onshore and offshore wind farms in the UK, Ireland, Europe and Asia as well as developing hydro and marine projects.

What is Nant y Moch Strategic Search Area D?

Nant y Moch SSA D is an area of land identified by the National Assembly for Wales as a strategic area for the delivery of large scale wind energy generation. This is to support UK climate change action, achieve Wales renewable energy targets for 2010 and 2020 and to ensure security in our electricity supply. SSA D was identified in Technical Advice Note 8: Renewable Energy issued in 2005.

Map of showing the Nant y Moch Wind Farm Development (boundary is in red)



Who is the Community Liaison Officer and What is Her Role?

Airtricity have appointed Eluned Lewis, a bilingual and locally-based Community Liaison Officer (CLO), to allow early and thorough engagement with communities surrounding the Nant-y-Moch Wind Farm development.

The CLO is based in the Machynlleth area, within easy reach of the immediately affected communities, and will be in post throughout the development and construction stages.

The CLO will take ownership of the Nant-y-Moch community consultation process and will have general responsibility for:

- Acting as the initial point of contact with local media
- Ensuring timely responses to enquiries and concerns
- Preparation and distribution of project information packs
- Launch of the wind farm web site
- Formulation and implementation of a Community Engagement Plan

The CLO will attend all Community Liaison Group (CLG) meetings and provide secretariat support to the CLG.

CONTACT DETAILS FOR THE CLO:

Eluned Lewis
Community Liaison Officer
Airtricity
Y Plas
Machynlleth
SY20 8ER

eluned.lewis@airtricity.com
Landline: 01654 702720
Mobile: 07814020097

What is the Community Liaison Group (CLG) and What is Its Remit?

The Community Liaison Group (CLG) will be a forum for dialogue between Airtricity and local communities and key stakeholders.

The CLG has a very specific remit in representing local community views, particularly:

1. To agree a 'Community Engagement Plan' (CEP) to be implemented by Airtricity in the run up to submitting a planning application.
2. To confirm that CEP activities that should be undertaken and completed prior to submission of the wind farm planning application have been satisfactorily implemented by Airtricity.
3. To help identify beneficiaries of community benefits funds, provide a platform for discussion about such funds, influence how the community benefits funds are allocated and distributed with up to £1,000,000 being released prior to the commissioning of the wind farm and to discuss and agree with Airtricity a set of detailed Community Benefit Commitments (CBCs) that Airtricity will be committed to delivering for the benefit of those communities and other stakeholders that have membership and representation on the CLG.
4. To co-sign with Airtricity a 'Statement of Community Involvement' (SoCI), presenting confirmation of completion of the CEP up to planning application submission as per 2 above.

Who has Active Membership on the Community Liaison Group (CLG)?

Active (voting) Membership of the CLG will comprise 1 representative from the following Community Councils:

Cadfarch Community Council (CC)

Ysgubor-y-Coed CC

Llangynfelyn CC

Ceulanamaesmawr CC

Trefeurig CC

Melindwr CC

Blaenrheidol CC

1 representative from the following Community Regeneration Partnerships:

Ecodyfi
Pentir Pumlumon
Menter Aberystwyth

1 representative from Airtricity

Appendix 1 contains details of how the membership of the CLG was defined and agreed with Ceredigion and Powys County Councils and a detailed list of further stakeholders and consultees who will be regularly notified of developments in the scheme and who will be invited to public events.

Who has Observer Status (Non-Active) Membership on the Community Liaison Group (CLG)?

Observer Status (Non-Active, non-voting) Membership on the CLG include 1 representative from the following :

Powys County Council
Ceredigion County Council
Forestry Commission Wales
The CLO
Dulas Limited
The Independent Facilitator

When and Where Will the Community Liaison Group (CLG) Meet?

The CLG will meet at a venue close to the proposed scheme set by the CLO on a quarterly basis prior to the submission of the planning application. Meetings will continue additionally on a quarterly basis following planning consent if awarded in accordance with dates set out and agreed at the inaugural meeting of the CLG (or alternatively a subsequent CLG meeting) and from time to time modified and/or agreed at subsequent meetings of the CLG. During the period of the planning process all meetings of the CLG will be suspended. Please see Appendix 2 for the proposed dates of the CLG Meetings.

Who and What is the Role of the Independent Facilitator?

The CLG will be chaired by an Independent Facilitator, who is an unaffiliated person (i.e. having no significant political or financial vested interests) and who will be elected by CLG members at a CLG meeting.

PART 2: THE COMMUNITY ENGAGEMENT PLAN (CEP)?

What is a Community Engagement Plan (CEP)?

A Community Engagement Plan (CEP) sets out the methods, timing and transparency of Airtricity's commitments to consult with the principal communities, interest parties and wider public on the Nant y Moch Wind Farm throughout the lifecycle of its development.

Why a Community Engagement Plan?

The developer, Airtricity, is required by way of commitments to the local area through obligations with the Forestry Commission Wales to consult openly and responsively with the affected communities and wider public. The CEP will describe how Airtricity will release information to the public and approximate timescales of when such information is to be released. It will also describe how and approximately when Airtricity will provide information, consult on the development of the scheme and how the public's opinion will be taken into account.

When will the CEP be Implemented?

The draft CEP will be presented to the CLG at its inaugural meeting on 25th November 2008 and a final version will be agreed at that meeting or shortly thereafter. Some details of the CEP will already have been undertaken prior to its official agreement with the CLG, however this retrospective work will be clearly presented as part of the agreed CEP. Consultation, information release and consideration of public opinion will be undertaken from the first Quarter of 2009 and throughout that year prior to the submission of a planning application. It will also continue throughout the planning process until a decision on the planning application for the Wind Farm is made. In the event that the scheme is approved consultation, information release and consideration of public opinion will continue throughout the construction phase and on into the operational phase of the wind farm.

How is a CEP to be drawn up?

Current best practice methods of community consultation have been adopted by Airtricity in the drafting of this CEP. The CEP requires the use of a wide range of consultative methods and media to ensure as many people as possible know about the Wind Farm and have an opportunity to comment on it.

Who will approve the CEP?

The CLG will consider, review, revise, agree and monitor implementation of the CEP. The CLG will meet approximately every 3 months (Quarterly) to fulfil its remit, part of which is to monitor the implementation of the CEP. The CEP will also be reviewed and informally or formally approved by the Forestry Commission Wales, Ceredigion County Council and Powys County Council.

How will we know the CEP has been Implemented?

Immediately prior to planning submission, Airtricity, in conjunction with the CLG, will issue a Statement of Community Involvement to confirm that the CEP has been implemented as agreed. The Statement will also set out Airtricity's broad package of community benefit commitments to the community over the lifetime of the project and will be presented at public exhibitions and as part of the planning application.

What next?

The information and proposal contained in Part 4 of this document forms the draft CEP. It sets out how and approximately when different consultees and stakeholders will be liaised with during different phases of the development. With the two local authorities Powys and Ceredigion County Councils having had opportunity to refine the draft CEP it is hoped that the CLG will agree the draft CEP at its inaugural meeting on the 25th of November 2008 or otherwise shortly thereafter. There will be an opportunity for discussion on the different elements of the draft CEP at this inaugural meeting of the CLG. When agreement is reached on the CEP it will be published and circulated to those deemed by the CLG to be interested parties in the CEP process.

PART 3: PROCESS FOR AGREEING AND IMPLEMENTING THE PLAN

The process for agreeing and implementing the CEP will comprise the following steps

1. Draft CEP prepared
2. Review of Draft CEP by CLG, Powys and Ceredigion Councils and Forestry Commission Wales
3. Final CEP agreed and approved
4. Final CEP implemented with respect of those aspects required to be implemented prior to planning submission.
5. Review of CEP implementation at Quarterly meetings of CLG throughout 2009 and prior to planning submission
6. Presentation of final CEP at pre-planning public exhibitions
7. Co-signing by CLG and Airtricity of Statement of Community Involvement confirming implementation of CEP as per 4 above
8. Post submission implementation whilst CLG meetings are suspended
9. Post consent implementation, including implementation during the construction phase of the development
10. Post commissioning implementation, during the operational phase of the development

Agreeing this Document and the Detailed CEP

We attest, approve and agree to the aims and terms set out in this Nant y Moch Community Engagement Plan document as set out in Part 4 of this document:

Signed on Behalf of:

Airtricity

Blaenrheidol CC

Cadfarch Community Council (CC)

Ceulanamaesmawr CC

Ecodyfi

Llancynfelin CC

Melindwr CC

Menter Aberystwyth

Pentir Pumlumon

Trefeurig CC

Ysgubor-y-Coed CC

PART 4: DETAILED COMMUNITY ENGAGEMENT PLAN

TABLE 1: EARLY DEVELOPMENT PHASE

When	What and Why
September 2008	<p>Appointment of a locally-based bilingual Community Liaison Officer (CLO) following site award to facilitate early and thorough engagement with the communities surrounding the Nant y Moch Wind Farm development who will act as the principal point of contact between the community and Airtricity. - COMPLETED</p> <p>Meetings with Ceredigion and Powys County Council to informally agree stakeholder lists, CLG membership and draft CEP. - COMPLETED for Ceredigion. ONGOING for Powys</p>
October 2008	<p>Development of CLG and selection process for members informally agreed with PCC and CCC. – COMPLETED for Ceredigion. ONGOING for Powys</p> <p>Letters from CLO and introductory leaflet sent to all identified stakeholders in Appendix 1. – COMPLETED</p> <p>Members of the CLG invited and provided with draft CEP and terms of reference for CLG. - COMPLETED</p>
November 2008	<p>Inaugural Meeting of the CLG on the 25th November 2008. Draft CEP discussed. - COMPLETED</p>
Quarter 4, 2008	<p>Independent Facilitator discussed by CLG members. - COMPLETED</p> <p>PR Agency appointed and strategy for information release and wider community engagement developed.</p>
Quarter 1, 2009	<p>CEP agreed and signed off by the CLG. Powys and Ceredigion County Councils and Forestry Commission Wales provided with a copy.</p> <p>Terms of Reference agreed and signed off by the CLG,</p> <p>Independent Facilitator agreed and nominated by CLG members.</p> <p>Bilingual project website launched with an online enquiry service and</p>

frequently asked questions section.

Further briefing letter to be sent to all identified stakeholders see Appendix 1.

Wider stakeholders consulted on stakeholder list.

Second Quarterly meeting of the CLG to be held see Appendix 2.

Quarter 2, 2009

Preparation for the 1st series of public exhibitions. Flyers sent out to all residents within a 5km radii of the proposed development

First series of public exhibitions held in appropriate locations near to the development. Feed back from the public exhibitions processed. Airtricity will keep a record of all comments received, will consider all reasonable suggestions and will show how these comments either were used to modify the development in any way, or dismissed on reasonable grounds.

Note: During this early development phase period the CLO will ensure ongoing two way communication between Airtricity and all of the identified stakeholders and specific interest groups listed in Appendix 1 and the wider community when appropriate. Where appropriate the CLO will meet with some of these stakeholders and specific interest groups to ensure effective information exchange throughout the early development phase.

TABLE 2: PRE PLANNING APPLICATION SUBMISSION

When	What and Why
Throughout 2009	Update and consult with the community on a regular basis through the EIA process. This will be done by presentations by the CLO, letters, leaflet distribution and a regularly updated website for the development
Quarter 2, 2009	Third Quarterly meeting of CLG to be held see Appendix 2. Discussion on the identification of potential pilot projects eligible for Early Release Funding (see Appendix 3)
Quarter 3 2009	Fourth Quarterly meeting of the CLG to be held see Appendix 2. Statement of Community Involvement discussed.
Quarter 4 2009	<p data-bbox="459 943 1460 1016">Informational flyers sent out to all residents within a 5km radius of the wind farm site boundary.</p> <p data-bbox="459 1068 1460 1267">Second series of public exhibitions held in appropriate locations in proximity to the development. Airtricity will keep a record of all comments received, will consider all reasonable suggestions and will show these comments either were used to modify the development in any way, or dismissed on reasonable grounds.</p> <p data-bbox="459 1319 1460 1393">Fifth meeting of the CLG - Statement of Community Involvement agreed and co-signed by CLG.</p> <p data-bbox="459 1444 1460 1644">Inform Powys and Ceredigion County Councils and the Department for Energy and Climate Change (DECC) of the community consultation process by way of provision of the CEP and the Statement of Community Involvement and include the Statement of Community Involvement as an supporting evidence which will accompany the planning application.</p> <p data-bbox="459 1695 1460 1767">Present a summary report on community consultation as an Appendix to the Environmental Statement.</p>

TABLE 3: POST PLANNING APPLICATION SUBMISSION

When	What and Why
Throughout 2010 -11 whilst the planning process is taking place	<p>Regular Quarterly meetings of CLG will be suspended whilst the planning process is taking place</p> <p>CLO to continue with the work of information release and website updating</p> <p>PR Agency to ensure timely release of information through press releases, as appropriate</p>

TABLE 4: POST CONSENT: CONSTRUCTION, OPERATION & DECOMMISSIONING*

When	What and Why
From the Time Consent is given	<p data-bbox="461 539 1522 658">Ensure the supply of supplementary information by developer to local planning authorities & responses to requests for information from local communities and key stakeholders</p> <p data-bbox="461 703 1522 775">Regular quarterly meetings of the CLG will be take place through out this final phase of development up till the wind farm is commissioned.</p> <p data-bbox="461 824 1522 898">If deemed required and appropriate by members of the CLG, CLO to arrange site visit(s) to other Wind Farm(s) for consultees if they so wish.</p> <p data-bbox="461 947 1187 983">CLO to attend meetings and give briefings as required</p> <p data-bbox="461 1032 1522 1106">CLO to ensure the timely release of information as and when this becomes relevant or pertinent to the local community</p> <p data-bbox="461 1155 1262 1191">PR Agency to ensure adequate press releases, as appropriate</p> <p data-bbox="461 1240 1477 1359">CLG, together with Powys and Ceredigion County Councils, to develop the Community Impact Proposal which will include the broad package of Community Benefits agreed by the CLG,</p>

*Note: If and when consent for the Wind Farm is granted then Airtricity will review, revise, refine and agree this final Post Consent part of the detailed CEP and seek approval through the CLG, Powys and Ceredigion County Councils and Forestry Commission Wales.

Appendix 1

Background: Work carried out to define Stakeholders and Community Liaison Group members

The FCW bid presented a preliminary list of potential stakeholders and the initial reasons for their selection. Considerable work went into the identification of these stakeholders, particularly through Dulas Ltd and its local knowledge of the area. This list has now been further developed by the Community Liaison Officer and has been signed off by Ceredigion and Powys County Councils.

For the Community Liaison Group, it would have been impractical to have a very large number organisations invited to Quarterly round table meetings: firstly, because convening meetings would be difficult with so many representatives with conflicting commitments, and secondly because the running of meetings would have been onerous. The purpose behind the CLG is to take an objective role in agreeing the consultation strategy to be employed by Airtricity, supporting the identification of relevant beneficiaries of the community benefits fund, and signing off the consultation strategy with a Statement of Community Involvement at the end of the development stage prior to planning submission. The CLG is not remitted to discuss the relative merits of the scheme, the efficacy of wind power, or the appropriateness of SSA D for a wind farm site.

Airtricity and Dulas have analysed the preliminary list of stakeholders in order to identify those organisations that should be represented on the CLG. The criteria for identifying such stakeholders have been based on a combination of the following factors:

- ⇒ Geographical proximity to the development – those organisations geographically represented within 5kms of the development, particularly local decision making bodies such as community councils
- ⇒ Development impact of the scheme – those organisations or communities most likely to be directly affected by the development of the scheme i.e. communities on the construction delivery route and those communities in and around the site boundary who may be construction disturbance receptors
- ⇒ Representative organisations in the area responsible for economic and sustainability regeneration
- ⇒ Visual receptors – those communities likely to witness the most significant change to the surrounding landscape as a result of the installation of wind turbine generators

Consequently we have identified the following local communities and key stakeholders that we feel should constitute the CLG:

- 1 Cadfarch Community Council (CC)
- 2 Ysgubor-y-Coed CC
- 3 Llangynfelyn CC
- 4 Ceulanamaesmawr CC
- 5 Trefeurig CC
- 6 Melindwr CC
- 7 Blaenrheidol CC
- 8 Ecodyfi
- 9 Pentir Pumlumon
- 10 Menter Aberystwyth

Local communities and key stakeholders that will not be on the CLG but that will be on the circulation list for updates on the Community Engagement Plan and Community Impact Strategy and which also will have an opportunity to be more closely involved in the development and delivery of the scheme are as follows:

- ⇒ Machynlleth Town Council
- ⇒ Pennal CC
- ⇒ Aberdovey CC
- ⇒ Borth CC
- ⇒ Genau'r Glyn CC
- ⇒ Tirymynach CC
- ⇒ Trawsgoed CC
- ⇒ Pontarfynach CC
- ⇒ Faenor CC
- ⇒ Llangurig CC
- ⇒ Ymlaen Ceredigion
- ⇒ Mid Wales Tourism
- ⇒ Tourism Partnership Mid Wales
- ⇒ Coed Cymru
- ⇒ Coed Lleol
- ⇒ Ceredigion Economic Regeneration Partnership
- ⇒ Powys Regeneration Partnership
- ⇒ Powys Association of Voluntary Organisations
- ⇒ Ceredigion Association of Voluntary Organisations
- ⇒ Council for the Protection of Rural Wales
- ⇒ Montgomeryshire Wildlife Trust
- ⇒ South and West Wales Wildlife Trust
- ⇒ Bro Dyfi Community Renewables
- ⇒ Dyfi Mountain Biking
- ⇒ Cambrian Mountains Protection Society
- ⇒ Cambrian Mountains Initiative
- ⇒ Cambrian Mountains Lamb Group
- ⇒ Wild Land Foundation
- ⇒ Pumlumon Project
- ⇒ Sustrans Cymru
- ⇒ Local Ramblers groups
- ⇒ RSPB
- ⇒ NFU
- ⇒ FUW
- ⇒ Local Women's Institutes and Merched Y Wawr

This list is not meant to be exhaustive and the CLO would welcome approaches from other organisations that feel they should be included in the circulation list for involvement in the community aspects of the development on the scheme.

Appendix 2

Meetings for the CLG

Proposed dates:

Tuesday November 25 th 2008	7.00pm
Tuesday January 27 th 2009	7.00pm
Tuesday April 28 th 2009	7.00pm
Tuesday July 28 th 2009	7.00pm
Tuesday October 27 th 2009	7.00pm
Tuesday January 26 th 2010	7.00pm