

Further consultation on the proposed Nant y Moch wind farm

Following extensive recent consultations on the proposed Nant y Moch wind farm proposal, further minor changes to the development have been prepared by SSE Renewables. These changes included refining the boundary for development (see map below), developing turbine delivery routes and site access arrangements, and preparing draft proposals on habitat management and public rights of way. Subject to this consultation an application is due to be submitted in the summer.

SSE Renewables originally published a Statement of Community Consultation (SOCC) in relation to the Nant y Moch wind farm proposal in May/June last year. This additional consultation provides a notification to involved parties that further information is now available in order to seek views on these recent amendments. SSE Renewables will place a high degree of importance on this additional pre-application consultation.

The proposed development site is located east of the A487 between Machynlleth and Aberystwyth and north of the A44 between Capel Bangor and

Ponterwyd in the Counties of Ceredigion and Powys.

The key permanent components of the wind farm as proposed to be submitted to the Infrastructure Planning Commission (IPC) are:

- 64 wind turbines (each between 126.5m to 146.5m in height to tip) and associated transformers;
- crane hardstandings;
- a network of underground cabling and on-site access tracks;
- an on-site electricity substation;
- upgrade works to public roads within site;
- three permanent wind monitoring masts;
- two access routes from the main highway to the development site; and
- habitat restoration areas.

The construction of the project will require the removal of stone from borrow pits on site and tree felling. In addition some temporary measures such as lay down areas, a construction compound, a

batching plant and the temporary stopping up of some rights of way will also be required.

Associated to the wind farm application, but being submitted for planning consent separately, will be:

- upgrade works to the public road for the third access route from the main highway (the road from the A44 crossing the Nant y Moch dam from Ponterwyd);
- the turbine delivery route from Swansea; and
- works along the grid connection from the on-site substation to the transmission network.

The three routes from the main highway to the development site may require some widening, passing places, new sections of road and alterations at the site entrances, including a new site entrance at the Nant yr Arian visitor centre which will be temporarily closed for up to 30 days.

Project Manager Madeline Cowley explains some of the changes: "We've been consulting thoroughly with members of the community and

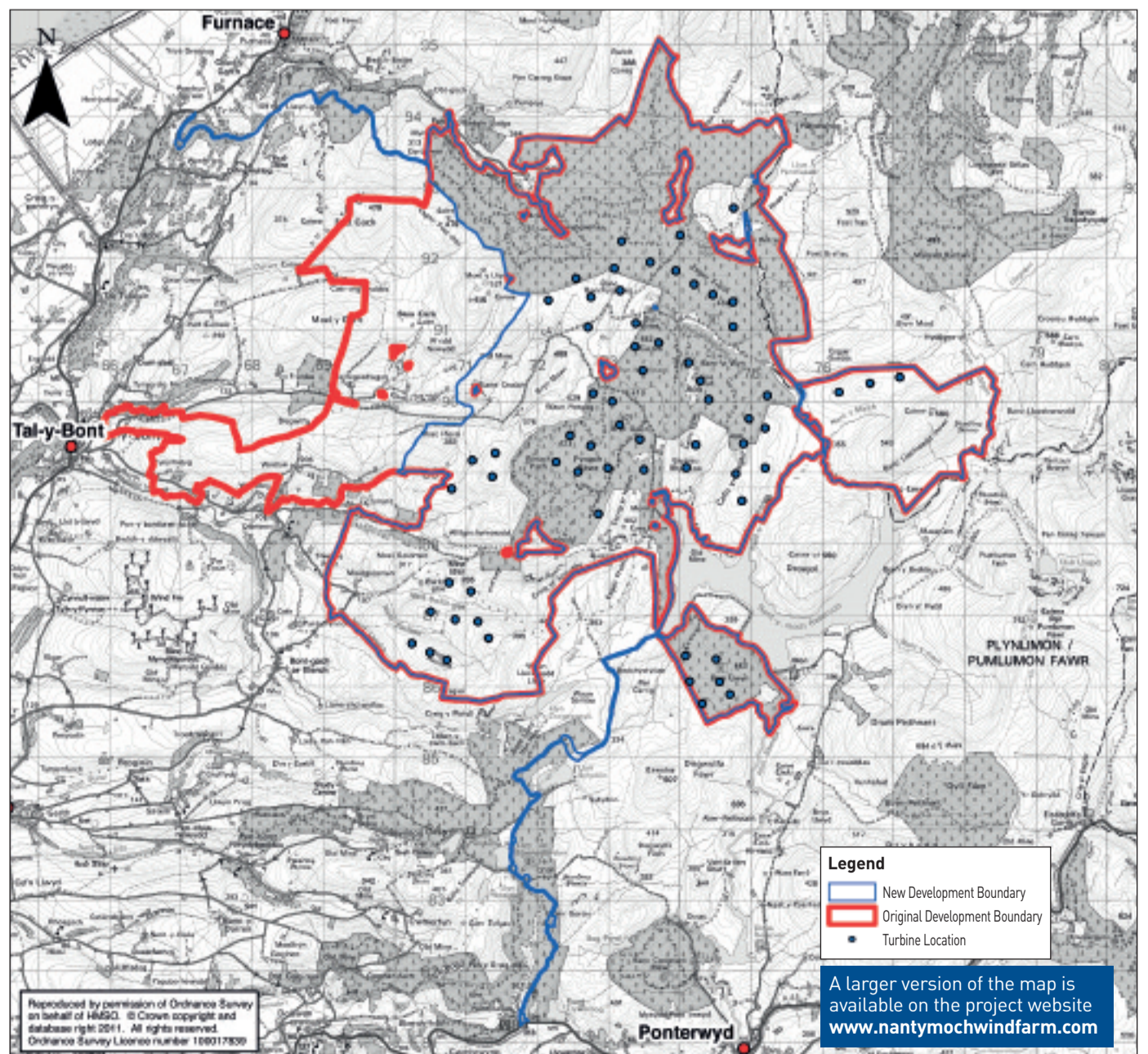
Supporting Nant y Moch wind farm

Along with all European Union nations, the UK has a renewable energy target for 2020. The target across the EU is 20%, but the UK has been set a 15% target in acknowledgement of the fact that we have a considerable amount of 'catching up' to do. These are not 'targets for targets sake': they represent a very real need to reduce our reliance on fossil-fuel-based energy sources – for a whole variety of reasons, not just because of concerns about climate change [source: Yes2Wind].

Community Liaison Officer, Eluned Lewis, explains: "The UK has a legal requirement to produce much, much more renewable energy than it currently does to safeguard security of supply and to tackle climate change. Nant y Moch is exactly the kind of project that will be needed if those legal targets are to be met and supplies of energy are to be safeguarded.

"The views of the local community are extremely important in the process of applying for permission to construct the Nant y Moch wind farm. I'd encourage all members of the community to look through our proposals and feed into our consultation work."

You can show your support for the Nant y Moch wind farm by writing to SSE Renewables at the address overleaf.



Further consultation on the proposed Nant y Moch wind farm

other interested parties on the proposed wind farm at Nant y Moch. Following this consultation we've now made some changes to the application which we'd like to consult on again before the submission of our planning application later in the summer. These changes include technical aspects, such as including our proposed access routes to Nant yr Arian and close to Furnace within the development boundary, and creating a draft Habitat Management Plan which includes a large area of peat restoration. However, some of the changes may have more direct effects on members of the wider community – such as the temporary closure to some rights of way during construction and the creation of further permissive rights of way as part of the overall development.”

Ways of consulting

Details of the amendments to the proposed development and relevant additional information, including the findings of the draft Environmental Statement, will be made available through the following channels:

- **Drop-in centre:** SSE will open the SSE Renewables Office in Machynlleth to the public on the following days during the consultation period: Tuesday 14, Tuesday 21, Saturday 25 and Tuesday 28 June, 12pm – 4pm
- **Newsletter:** this newsletter has been distributed to the community and key stakeholders. A copy is also available on our website, at www.nantymochwindfarm.com
- **Direct communication:** SSE will send information direct by post and email to key local stakeholders.
- **Website:** SSE will continue to provide information about the project on our website. The website will explain what we are consulting about, contain all consultation information and allow people to submit their comments on-line via an enquiry form.

Deposit information: information as described above will also be available for viewing at the following locations:

- Aberystwyth Library, Corporation Street, Aberystwyth, SY23 2BU (Mon-Fri 9:30-18:00 Sat 9:30-17:00);
- Machynlleth Library, Heol Maengwyn, Machynlleth, SY20 8DT (Mon & Fri 9:30-13:00 and 14:00-19:00 Tue & Wed 9:30-13:00 and 14:00-17:00 Sat 9:30-13:00);
- Crymych Library, Preseli School, Crymych, SA41 3QF (Tue 14:30-17:30 Fri 16:00-18:00 Sat 10:00-13:00);
- Carmarthen Library, 9 St Peters Street, Carmarthen, SA31 1LN (Mon-Wed & Fri 9:30-19:00 Thu & Sat 9:30-17:00);
- Ceredigion County Council at Penmorfa, Aberaeron, Ceredigion, SA460PA (Mon-Thu 8:45-13:00 and 13:45-16.30 Fri 8:45-13:00 and 13:45-16.00);
- Canolfan Rheidol, Rhodfa Padarn, Llanbadarn Fawr, Aberystwyth, SY233UE (Mon-Fri 9:00-16:00); and
- Powys County Council, County Hall, Llandrindod Wells, Powys, LD1 5LG (Mon-Thu 8:30-17:00 Fri 8:30-16:30).

SSE is seeking your views on the proposals, the change to the development boundary and the supplementary information. If you have any comments on these areas, please contact us by email or write to the Community Liaison Officer at the following address:

Y Plas, Machynlleth, Powys, SY20 8ER
eluned.lewis@sserenewables.com;

All responses must be received by 5pm on 15 July 2011.

Other consultations in the local area

National Grid and SP Manweb are currently consulting in mid Wales on proposed powerlines for wind farm grid connections. Mynydd y Gwynt wind farm is also currently consulting in the local area.

Turbine delivery route



We have been consulting with the Highways Authorities and Police on the turbine transport route and a traffic management plan is in the process of being developed. The following information on the route is currently available in its draft form:

- In the region of 10-15 locations along the proposed route are expected to require minor widening on highway verges to create additional areas where the convoy or oncoming traffic can be held in order for traffic flows to be managed.
- Minor modifications to certain roundabout junctions consisting of curb realignment, modification of islands or street furniture will be required, including at Cardigan, near Aberporth and at Penparcau and Llanbadarn in Aberystwyth. In each case, necessary modifications would be designed to ensure the safety of all road users is maintained and will be agreed with the highway authorities;
- A number of traffic islands with bollards will need to be replaced with demountable versions, to allow the passage of some of the larger loads. Locations where this is expected to be necessary are Crymych, Blaenffos, Sarnau, Llwyncelyn, Llanfarian, Penparcau and Llanbadarn; and,
- Restrictions to parking may be required at the certain locations to allow the passage of some of the larger loads. Temporary restrictions are potentially necessary on limited sections of the road in Clunderwen, Llandissilio, Crymych and Llanon.

The application for development consent and the IPC

The Planning Act 2008 defines onshore wind farm projects at and above 50 megawatts to be 'Nationally Significant Infrastructure projects' or NSIPs. These require an application to be made to the Infrastructure Planning Commission (IPC) for a Development Consent Order. The proposed development is 'Environmental Impact Assessment (EIA) development' for the purposes of the Infrastructure Planning Regulations 2009 and therefore an Environmental Statement (ES) will accompany the request for a Development Consent Order to the IPC which will determine the application. The IPC has a duty set out in the Planning Act 2008 to

examine NSIP applications and before an application is accepted by the IPC it must be satisfied that the applicant's pre-application consultation has complied with the requirements of the Planning Act 2008, and that views and impacts identified through the consultation stages have been taken into account in the final application. In accordance with Section 37 of the Planning Act 2008, SSE will submit a Consultation Report with its application for a Development Consent Order.

There are two draft National Policy Statements (NPS) which are relevant to the Nant y Moch wind farm application – the overarching Energy NPS (EN-1) and the

Renewables NPS (EN-3). NPS form the primary policy consideration for IPC decisions. EN-3 lists biodiversity and geological conservation, historic environment, landscape and visual, noise and vibration, shadow flicker, and traffic and transport as key considerations for onshore wind. SSE considers that other key issues likely to arise include impacts relating to: forestry, hydrology, mining, peat, telecoms and air-safeguarding, land use recreation and public rights of way, socio-economics and air quality and climate change. Consultation on the draft NPS has now been completed and they are expected to be finalised and published sometime later this year.

Produced in Mid Wales by SSE Renewables

This is printed on recycled paper at Y Lolfa, Tal-y-bont. For more information about the Nant y Moch Wind Farm project, please contact Eluned Lewis, Community Liaison Officer, SSE Renewables, Swyddfa 101, Y Plas, Machynlleth, Powys, SY20 8ER

mb: 07814 020097 Tel: 01654 702720 Fax: 01654 702720
 Email: eluned.lewis@sserenewables.com
www.nantymochwindfarm.com

We'd like to keep you informed about developments on this exciting new project. However, if you would prefer not to receive these updates, please write to us, call us, or e-mail us at the details provided.

SSE Renewables Developments (UK) Limited is part of the Scottish and Southern Energy Group
 SSE Renewables Developments (UK) Limited, Victoria Terrace St Philips Bristol BS2 0TG
 Tel: +44 0117 3160101 www.sserenewables.com

The Registered Office of SSE Renewables Developments (UK) Limited is 2nd Floor 83-85 Great Victoria Street Belfast BT2 7AF Northern Ireland
 Registered in Northern Ireland No. NI043294