

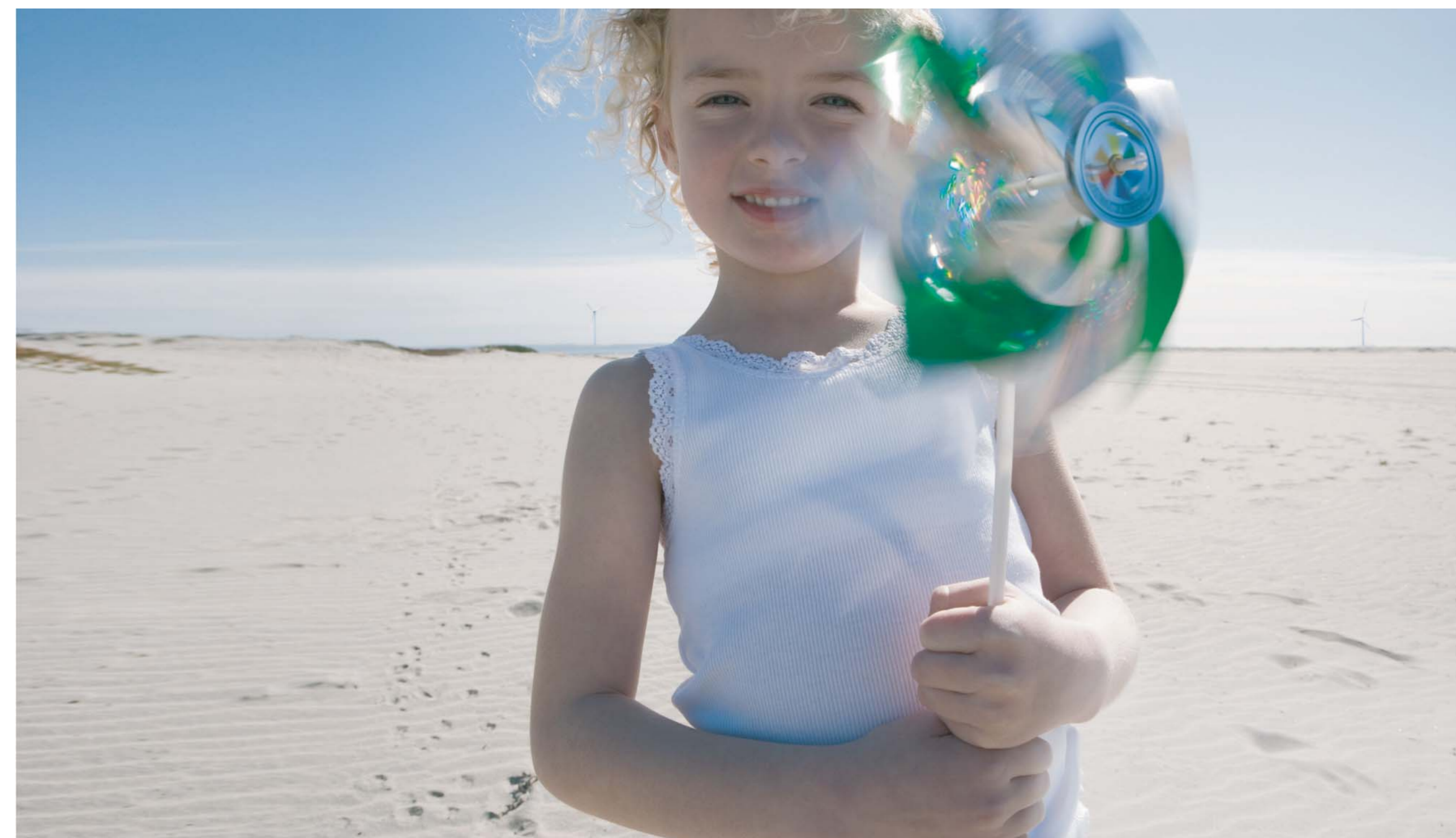
## BENEFITS TO THE LOCAL COMMUNITY

Airtricity is committed to implementing a wide ranging Community Impact Strategy which includes a package of local community benefits.

The Nant y Moch Community Benefit Package includes:

- An early release, one-off payment prior to commissioning of £3,000 per MW
- Payments throughout the life of the wind farm of £2,000 per MW per annum
- Additional annual payments throughout the life of the wind farm of 2.5% of the ROC recycle income

The funding will be payable throughout the operational life of the wind farm. As the installed capacity of the wind farm is expected to be at least 140MW, this equates to a one-off payment of at least £420,000 and at least £280,000 in Community Benefit funding per annum thereafter.



The total community benefit package equates to about £7.5 million over the lifetime of the wind farm.

## COMMUNITY BENEFITS PACKAGE

The exact nature of benefits will be agreed and finalised with the communities, Councils and other stakeholders after consent is granted. In the meantime, some of the possible benefit streams currently being discussed include:

### Renewable Energy Education Package

- Sustainable Energy Assessments of local schools and community Buildings.
- Interactive Welsh language web site for school children and teachers.
- Specialist Education Officer to provide dedicated energy education.
- Educational renewable energy installations for state schools within the community.

### Offer and Facilitation of Community Ownership

- Airtricity would make available for purchase by the local community, at fair value, either a turbine or an equivalent value of shares, once the wind farm has been commissioned.

### Carbon Reduction Funds

- Local Energy Action Plans and funding support for sustainable energy projects including biomass heat, free home insulation for local houses and micro renewables.

### Benefits Directly Linked to Community Use of Forestry

- Mountain bike trail provision, rights of way improvement and support for community management groups, woodland access and forest school initiatives.

### Benefits Directly to Communities

- Village hall restoration, further education grants, and a small grants fund

## HAVE YOUR SAY

Do you live near the area of the Nant y Moch wind farm? How do you think the community benefits funding should be channelled in order to maximise local community benefits? Do you know of any projects in the area which could benefit? Please let us know what you think! Questionnaires at this exhibition will enable you to have your say. For further information please visit the website at: [www.nantymochwindfarm.com](http://www.nantymochwindfarm.com) or [www.ffermwyntnantymoch.com](http://www.ffermwyntnantymoch.com)



## WIDER ECONOMIC BENEFITS

Airtricity is committed to seeking to maximise the use of products and services sourced from Welsh suppliers at all times.

The development of the Nant y Moch wind farm offers significant employment, investment and income potential to the region. Airtricity has already invested over £2 million to date into the local and Welsh economy and this investment is set to continue. The wider economic benefits to the community and economy include capital expenditure investment, annual rateable valuation contributions to local authorities, local direct and indirect investment and of course employment. The mobilisation on-site will require local construction contracting, locally-sourced civil materials and raw materials, and local services from shops, hotels, restaurants, and business service providers among many other local business types.

In addition, Airtricity has appointed a local Welsh-speaking Community Liaison Officer, has retained staff at Dulas Ltd in Machynlleth and contracted the services of Melin Cyf (a subsidiary of local PR consultancy Strata Matrix) and employs Wales-based ecologists and other consultants.